

Technical Data:

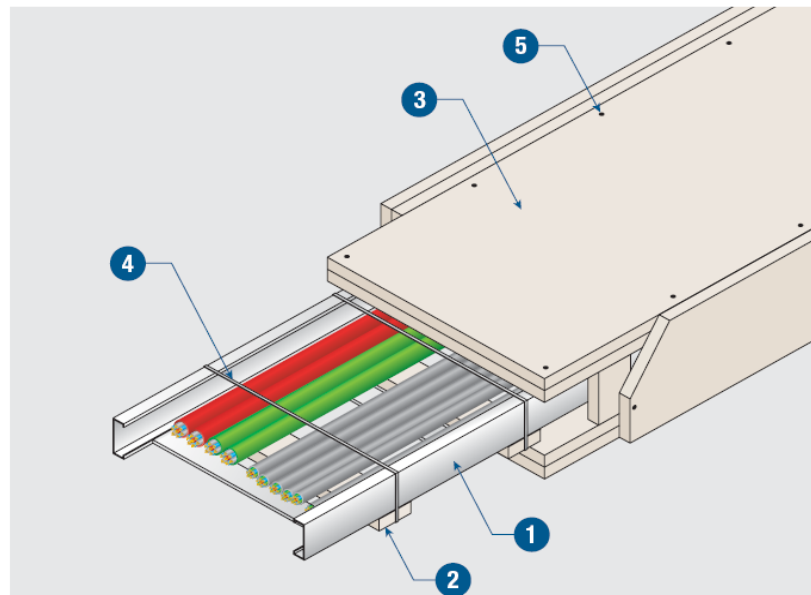
Promat PROMATECT®-H cable encasement

30 and 60 minute PROMATECT®-H to Hydrocarbon fire test curve (HIFT).

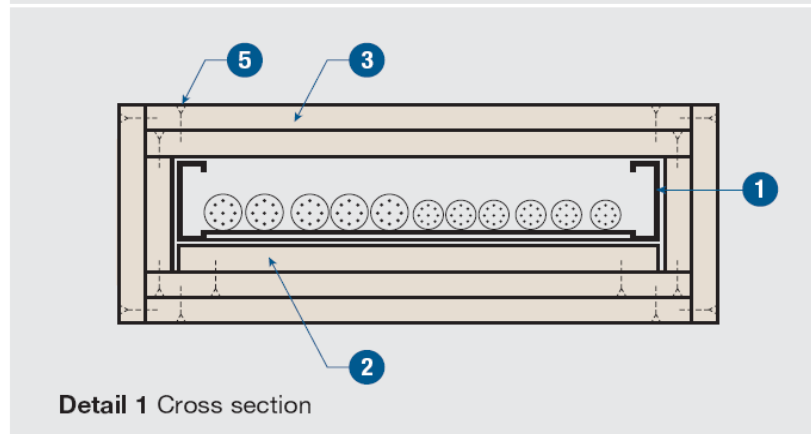
External fire exposure and to a critical cable temperature of 120°C.

Exova Warringtonfire
Assessment Report:
WF 303579

Maximum internal encasement size:
600mm wide x 450mm high,
with 12mm suspension rods,
and 41/41 x 2.5 Halfen or Unistrut
support channels at maximum
1250mm centres.



Installation Method



Detail 1 Cross section

1. Cable tray, ladder or solid bottom.
2. PROMATECT®-H support member ¾ inch (20mm) thick for 30minutes, 1 inch (25mm) thick for 60minutes.

4 inch (100mm) wide, length to match width of cable tray, maximum width 24inch (600mm); spaced 24 inch (600mm) maximum centres, to bottom of cable tray only, held in place using steel banding.

3. PROMATECT®-H, 2 x 20mm for 30 minutes fire protection, 2 x 25mm for 60 minutes. (Promat PROMASEAL® VENTILATION GRILLS may be required to prevent excessive build up of heat in non-fire conditions).
4. Support strip fasteners, steel banding ¾ inch x 24 swg (20mm x 0.6mm).
5. Cladding fixings. 4.2mm (M4) length 35mm or 38mm (for 30 minute) or 40 or 45mm (for 60 minute), at 8 inch – 12 inch (200mm – 300mm) centres

AUTHORITY: Exova Warringtonfire Assessment Report: WF 303579

TRS-D – 002

Page 1 of 1
(Jan 2011)



Promat Middle East
Promat Fire Protection
Suite 1805
18th Floor
Dubai Festival City Tower
PO Box 123945
Dubai, UAE.

Tel: 00 971 4 232 9780
Fax: 00 971 4 232 9781
Web: www.promatfp.ae

