



Technical Catalogue & Specifications

 **PROMETAL**
ASSA ABLOY

ASSA ABLOY, the global leader
in door opening solutions



The ASSA ABLOY Group

World leaders in door opening solutions

As the world's leading door opening solutions provider we are dedicated to satisfying end-user needs for security, safety and convenience.

With over 150 companies operating in more than 40 countries, the Group is the strongest global player in the industry with around 46,000 employees and circa €7.3 billion sales worldwide.

Today ASSA ABLOY is the leading global supplier of intelligent lock and security solutions. Its products account for more than one in ten of all lock installations worldwide.

ASSA ABLOY Group is represented in all major regions, on both mature and emerging markets, with leading positions in much of Europe and North America and in Australia.

In the rapidly growing electro-mechanical security sector, the Group has a leading position in fields such as access control, identification technology, automatic doors and hotel security.

ASSA ABLOY's vision is to be the most innovative supplier of total door opening solutions in order to deliver safe and convenient security solutions that provide real added value to customers.

Using the latest technologies and tried-and-tested techniques we are constantly developing innovative solutions that improve our customers' lives through greater security, safety and convenience.



ASSA ABLOY Security Solutions

Global solutions at your door step

The strength of ASSA ABLOY Security Solutions Middle East lies in its brands, which include some of the best-known and most trusted names in the security industry.

In the Middle East, we are promoting a one stop solution for complete project requirements to designers and consultants.

Each of our brands complements the other with its different strengths, allowing us to offer tailored solutions for all our customers and end users within the construction market. Our solutions are designed to withstand the rigours of demanding environments and achieve the highest legislative accreditations.

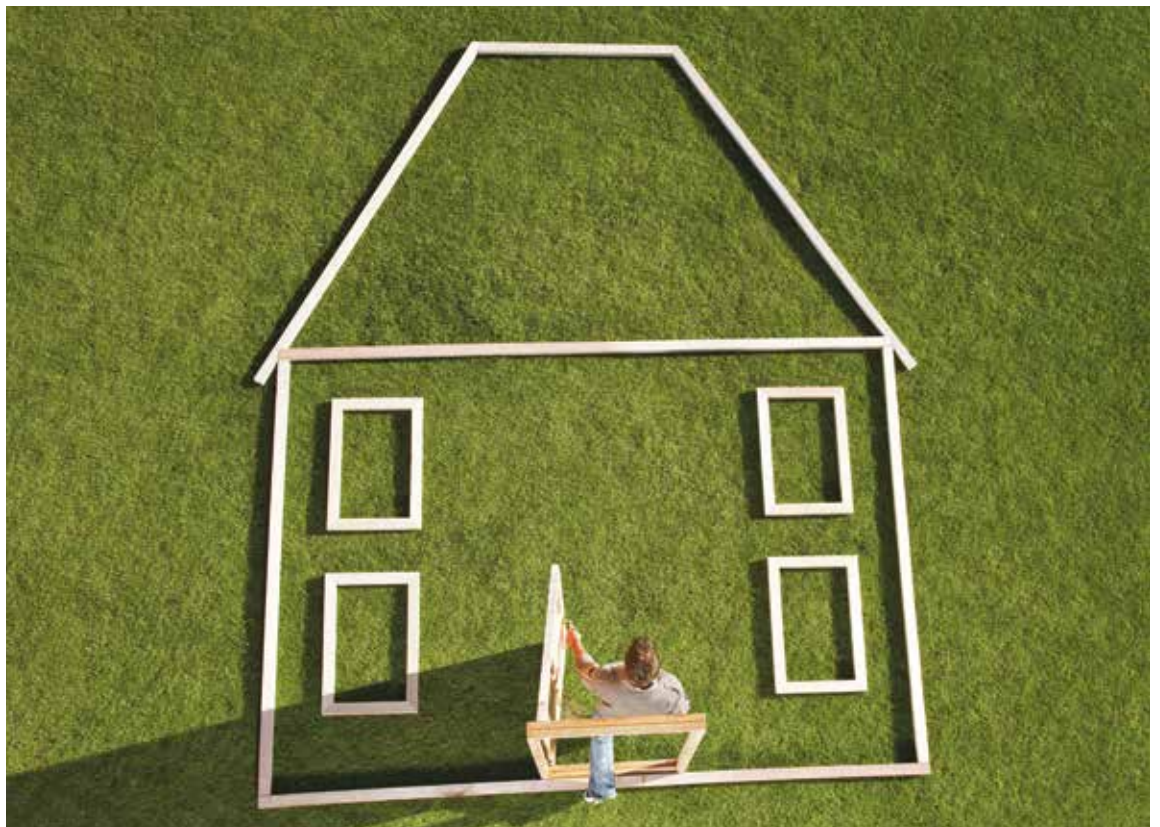
ASSA ABLOY Security Solutions products include master key systems, security and emergency locks, electric locking products, and supporting architectural hardware such as door furniture, hinges, door closers and escape systems.

As part of ASSA ABLOY's commitment to easing the specification process, we provide a specification writing service for specifiers and consultants in NBS or CSI format. Working as a trusted partner,

our specialists ensure that solutions match client requirements, legislation and budget. With vast experience in all types of door applications, we offer specialist consultancy and support services to make specification quick, easy and applicable to all budget sizes. We offer the benefit of streamlined costs, risk management, rationalization of products and the maintenance of appropriate security levels across the total project.

Our products offer ultimate security in combination with aesthetic appeal for architects and specifiers with a discerning eye for top quality solutions. From security doors and sophisticated access control technology to stylish ironmongery, our ability to mix form and function enables a range of robust and attractive security systems to meet even the most challenging design requirements. Each of our brands has its own unique strengths, enabling us to hand pick solutions for each project.

ASSA ABLOY Security Solutions Middle East office is located in Dubai, UAE. We also have offices in Saudi Arabia, Qatar and Egypt and serve entire Middle East markets.



PROMETAL Metal Industries Factory LLC is a market leader in door technology based in the UAE. We have been established for over 15 years manufacturing metal products growing to be a regional leader in design and manufacture of high quality certified steel door sets.

We provide solutions for acoustic, security, speciality doors, cleanroom doors, glazed screen doors, lead lined doors and windows. PROMETAL doors are widely used in commercial, educational, residential, retail, sports, theme parks, oil & gas industries and healthcare sectors covering the markets of the UAE, GCC, the Gulf region, Asia & Africa, Iraq, and Afghanistan.

Located in Jebel Ali Industrial Zone, with a factory building area of 15,000 square meters and more than 300 dedicated employees, PROMETAL offers a fully coordinated design, scheduling, manufacture, installation and maintenance package.

Our guarantee is to provide technical solutions, on time, to a high quality manufactured according to approved international standards. PROMETAL's team of professional designers are on hand to develop product solutions to meet our customers expectations in terms of technical specifications and aesthetics. Creative solutions are provided to overcome even the most problematic design schemes.

Our maintained Quality Control Management system alongside FPC (Factory Production Control) surveillance audits performed on a regular basis mean customers buy our products with a feeling of confidence. The latest manufacturing techniques and processes used in our production demonstrate our teams' continued commitment to provide high quality products to serve our customers.



Fire Rated Doors

PROMETAL provides a wide range of fire proof doors available with a variety of configuration and vision panel options, tested according to American Standards (UL) & British Standards (BS) suitable for locations such as staircase, corridor, service rooms or entrances.

Our full range of insulated doors with up to 4 hours fire rating is designed to suit power substations, cold stores, heat transfers applications and other similar locations.



Summary of Fire Rated Doors Certifications

Certification Body	Certificate Number	Test/Relevant standard	Product Description	Test/Assessment Report reference
UL	20070604-R25511, 20070604-R25546	UL 10B	Single Swing Steel Doors Double and Single Leaf	R25521
Warrington Exova	ME0085	BS 476 part 22	Single Swing Steel Doors, Single Leaf	WF:166187
		BS 476 part 22	Single Swing Steel Doors, Single Leaf	
		BS 476 part 22	Single Swing Steel Doors Double and Single Leaf	Assesment Reports (WF:169293, WF:158579)
BM TRADA Q-MARK	664	UL 10C	Single Swing Double Leaf Steel Doors	TBWC/MK46
		UL 10C	Single Swing Steel Doors, Single Leaf	TBWC/NA14
			Single Swing Steel Doors, Single Leaf	
		BS 476 part 22	Single Swing Double Leaf Steel Doors	TBWC/NA12
		BS 476 part 22	Single Leaf Sliding Door	TBWC/MJ17

Summary of Fire Rated Modular/Composite Panel Systems Certifications

Certification Body	Certificate Number	Test/Relevant standard	Product Description	Test/Assessment Report reference
CONFORMITY CERTIFICATION SERVICES Q-PLUS	PC119	BS 476 part 22	Fire Rated Modular Metal Panel System-Non Load Bearing Partition Wall	TBWI/NE66



Fire Rated Doors

These fire rated doors provide safety and security to public areas from retail to industrial premises as well as parking lots.

Screens are designed to satisfy fire protection, security considerations and protect against the influences of weathering. They satisfy the most stringent requirements for technical functionality and extreme continuous stresses.



Single / Double	Shutter thickness	Products Covered Max. Size (W X H) in mm	Core Material	Fire Rating								
				Max. Rating	FD30	FD45	FD60	FD90	FD120	FD150	FD180	FD240
Double	46	Leaf size for Single door : 933 x 2360 . Leaf size for Double door : 2122 x 2360	Honey Comb	3 Hrs		√	√	√	√		√	
Single	45	Frame : 885 x 2200	Honey comb	4 Hrs	√	√	√	√	√		√	√
Single	45	Frame : 888 x 2200	Rockwool	1 Hr	√	√	√					
Refer the Warringtonfire Certificate					√	√	√	√	√		√	√
Double	46	Frame :2250 x 2995	Rock Wool	2 Hrs	√	√	√	√	√			
Single	46	Frame: 1176 x 2400	Honeycomb	2 Hrs	√	√	√	√	√			
Single	46	Frame: 1176 x 2400	(PIR) Foam	2 Hrs	√	√	√	√	√			
Double	46	Frame :2300 x 3000	Honeycomb	161 mins	√		√	√	√	√		
Double	50	Leaf : 1050 x 2195	Honeycomb	151 mins	√		√	√	√			

Single/ Double	Shutter thickness	Products Covered Max. Size (W X H) in mm	Core Material	Fire Rating								
				Max. Rating	FD30	FD45	FD60	FD90	D120	FD150	FD180	D240
Double	100	Overall Dimension: 3000 x 3000	Rock Wool+Gypsem Composite Panel	240 mins	√	√	√	√	√		√	√

Acoustic Doors

A complete range of single and double door sets is available to suit performance requirements up to STC 50 dB and 120 min fire integrity. Ideal applications include cinemas, studios, mechanical rooms, generator rooms and other sound polluted rooms.

All details shown are typical only and our Technical Support Group will be pleased to recommend an individual design application.



Summary Of Acoustic / Air Permeability / Water Tightness Tested Doors

Test Laboratory	Test/Relevant standard	Test Report reference	Shutter thickness	Size (W X H) in mm	Core Material	Max. Rating
Intertek	ASTM E90	AU09074014-1	45	Frame 914 x 2133	Honeycomb	STC 35
	ASTM E90		45	Frame 914 x 2133	Rock Wool	STC 37
	ASTM E90		45	Frame 914 x 2133	Rock Wool	STC 38
	ASTM E90		45	Frame 914 x 2133	Rock Wool	STC 40
	Water Tightness (BS 6375-1: Part 1)		45	Frame 914 x 2133	Honeycomb	Class 3A, 100pa
	Air Permeability (BS 5368: Part 1)		45	Frame 914 x 2133	Honeycomb	-
Bodycote - Al Futtaim	STC Calculated According to BS EN ISO 717 Part 1 and tested as per BS EN ISO 140 Part 3	WQ0803500	80	Leaf 828 x 1958	Rock Wool + Calcium Silicate	STC 45
Kilargo Acoustic Lab	STC Calculated According to ASTM E413 and tested as per ISO 10140	25092013/CT/01	56	Frame 1000 x 2200	Rock Wool	STC 47
Kilargo Acoustic Lab	STC Calculated According to ASTM E413 and tested as per ISO 10140	25092013/CT/02	56	Frame 1000 x 2200	Rock Wool	STC 49

Summary Of Security/ Detention & Blast Resistant Doors

PROMETAL offers a full range of security cell grills for police stations, designed to meet the international standard requirements for detention products.



Summary Of Detention Doors

Report Title	Relevant standard	Classification	Design Analysis & Calculation Report reference
Structural Analysis of Detention Doors	ASTM F 1450-05 and F 1592-1	Grade 3	TWE-J12013-01 Rev0
Structural Analysis of Ballistic Doors	Conforming to European Ballistic Standards, EN1522/1523 & UL752	Level 1	EME-J12075-Rev-3a
Structural Analysis of Burglar/Vandal Resistance Door	Conforming to DIN EN 1627-2011	RC5 & RC6	EME-J12076- Rev A1

Our complete range of bullet resistant products are readily available and can be furnished with factory installed bullet resistant glazing.



Summary Of Blast Resistant Doors

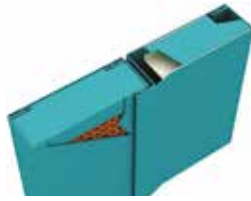
Report Title	Relevant standard	Blast Pressure Rating	Design Analysis & Calculation Report reference
Blast Design Analysis & Calculation Of Lhr/Rhr Single Doors	The analysis and design was carried out according to ASCE	0.25 bar	ODD162-ST-RPT-02
Blast Design Analysis & Calculation Of Double Doors (Seated Case Doors)	The analysis and design was carried out according to ASCE	0.25 bar	ODD162-ST-RPT-004
Blast Analysis Of Single Doors For A Blast Overpressure Of 0.41 Bar	The analysis and design was carried out according to ASCE	0.41 bar	ODD162-ST-RPT-06
Blast Analysis Of Double Doors For A Blast Overpressure Of 0.41 Bar	The analysis and design was carried out according to ASCE	0.41 bar	ODD162-ST-RPT-08

Typical Door Leaf Types/ Details

Leaf Section



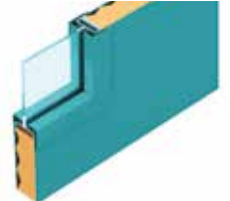
Double leaf-flush design



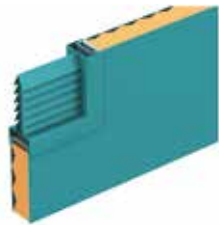
Double astragal detail



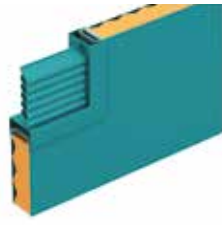
Round vision panel



Square vision panel

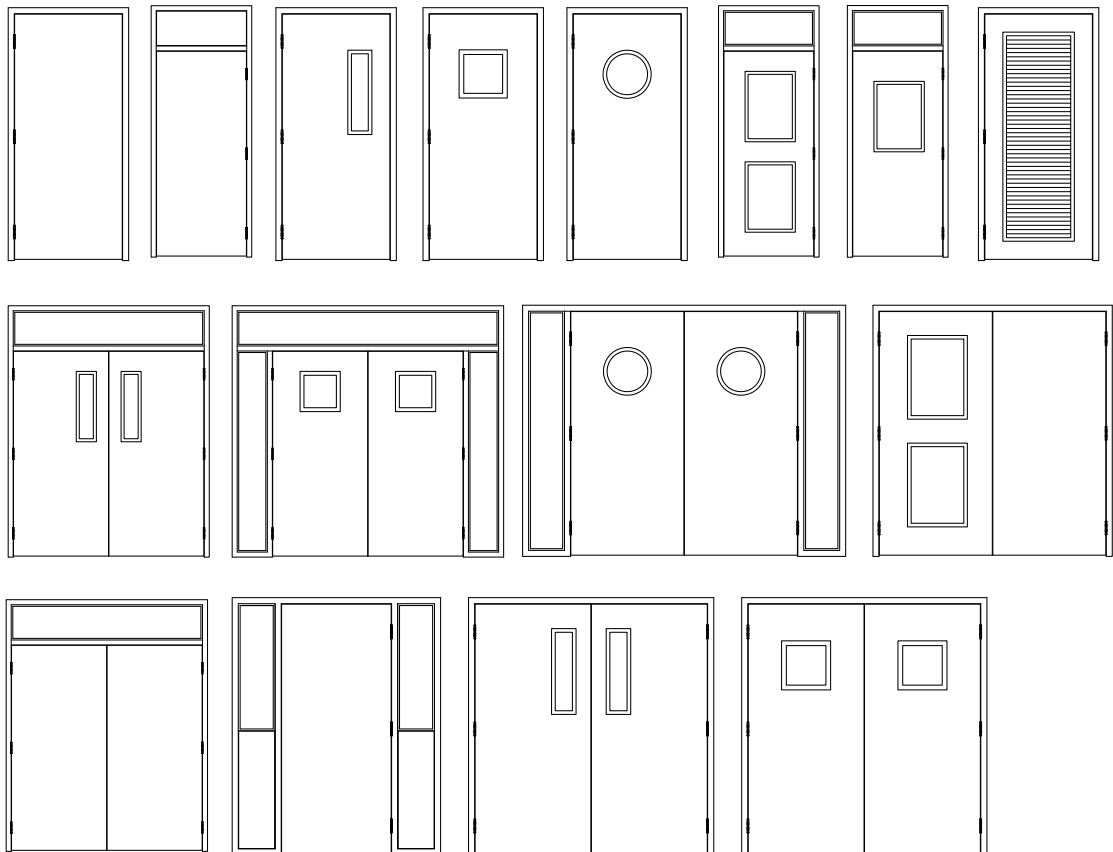


Louver - V shape

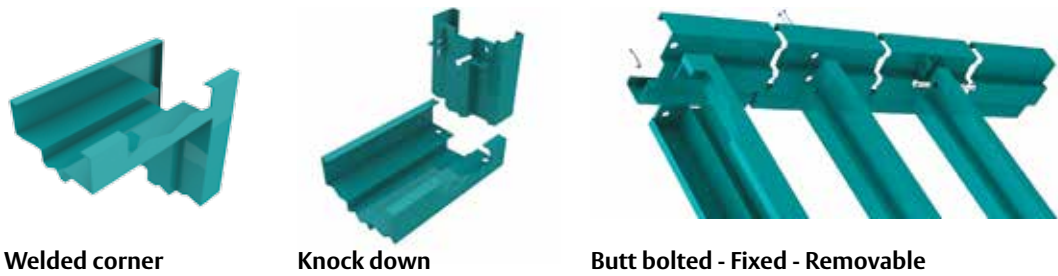


Louver - Z shape

Door Configurations



Frame Construction

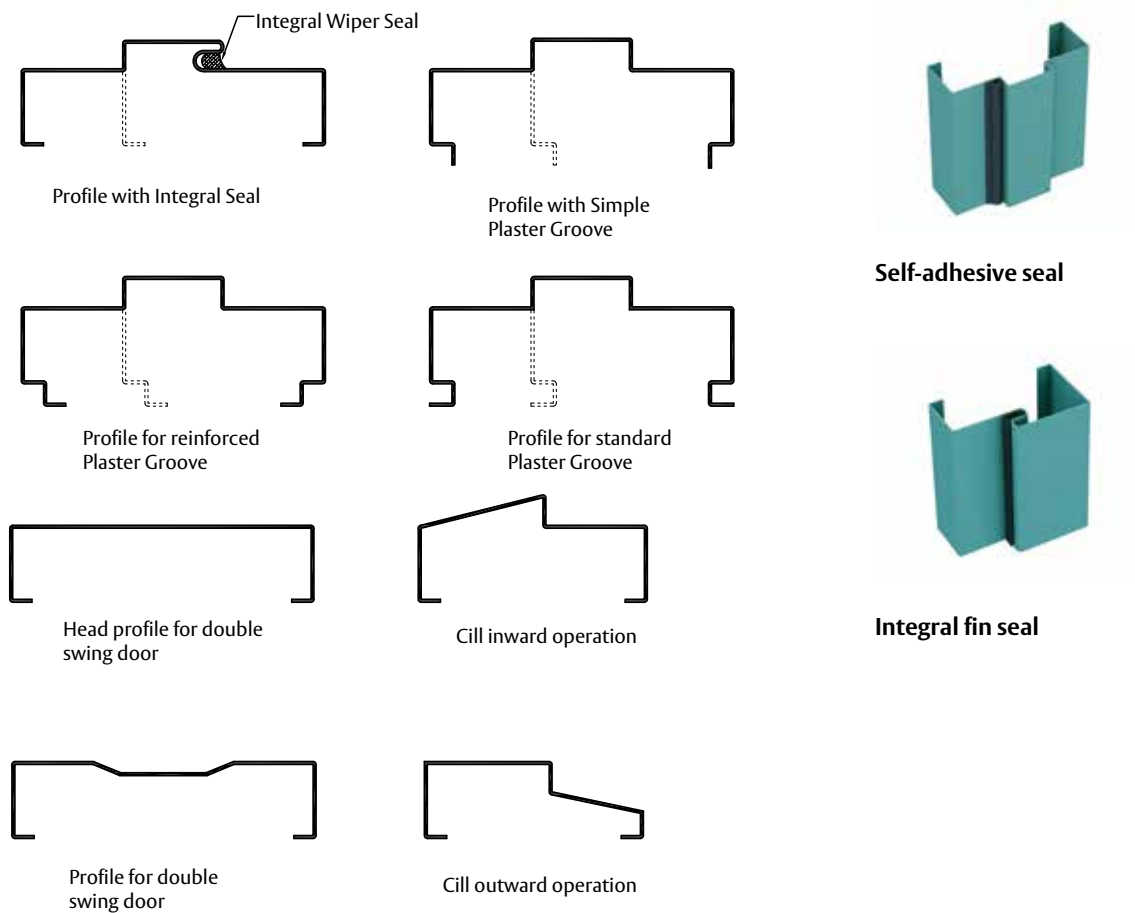


Welded corner

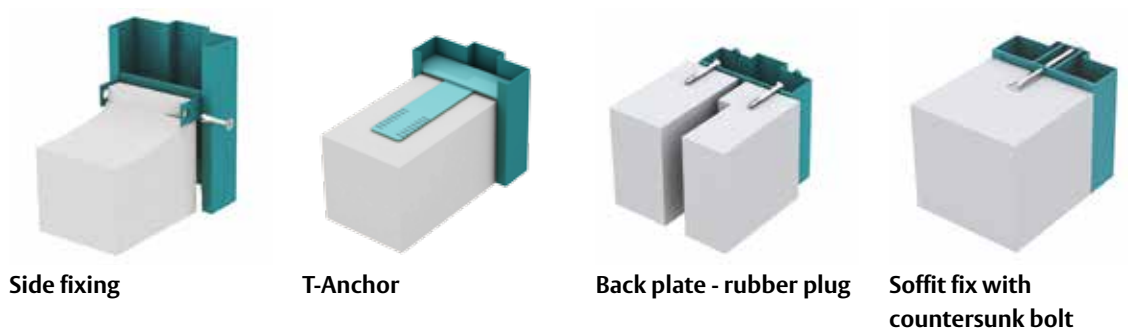
Knock down

Butt bolted - Fixed - Removable

Frame Section



Frame Fixing



Side fixing

T-Anchor

Back plate - rubber plug

Soffit fix with countersunk bolt

Standard Hardware Options

A choice of hardware solutions are available as standard for our doors from ASSA ABLOY Security Solutions Middle east.

Our product offering includes cylinders, security and emergency locks, electric locking products,

intelligent asset management systems, access control solutions, automatic operators, architectural glass hardware and supporting architectural hardware such as door furniture, hinges, sliding hardware door closers and escape systems.

Lever Handles



Hinge



Cylinder



Door Stop



Sliding Hardware



Handle on Plate



Single Pull Handle



Back to Back Pull Handle



Electromagnetic Lock



Standard Hardware Options

Narrow Lock



Mortice Lock



Electronic Lock



Detention Lock



Code Handle



Access Control



Electric Strike



Electronic Cylinder & Key



Panic Exit Device - Push Bar



Panic Exit Device - Touch Bar



Over Head Door Closer



Security Door Closer



Concealed Door Closer



Material :

- Galvanized steel
- Mild steel
- Stainless steel grade 304
- Stainless steel grade 316

Finish performance:

- Increased corrosion resistance
- Marine grade

Steel finishes:

- Epoxy powder primed finish
- Polyester powder coated Finish
- Decoral painting system
- Wet paint (spray paint)
- Color : a wide selection of standard RAL colors available.

Stainless steel finishes:

- Mirror polish finish
- Brush satin finish

Note : Other finishes can be offered upon request.





ASSA ABLOY is the global leader in door opening solutions, dedicated to satisfying end-user needs for security, safety and convenience

ASSA ABLOY

PROMETAL

ASSA ABLOY

PROMETAL manufactures high quality certified security and safety doors including fire rated doors, detention doors, bullet proof doors, blast proof doors, watertight doors, thermally resistant doors and grill doors.

LOCKWOOD

ASSA ABLOY

LOCKWOOD is part of ASSA ABLOY, the global leader in door opening solutions. LOCKWOOD is a leader in wood manufacturing of fire rated doors, residential doors, windows and joinery works.

ASSA ABLOY Security Solutions
PROMETAL Metal Industries
P.O. Box 37765
Jebel Ali Industrial Area 1
Dubai
United Arab Emirates
Tel.: +971 (0) 4 8804888
Fax: +971 (0) 4 8804884
Email: ae.prometal@assabloy.com
www.middleeast.assaabloy.com/doors